

# CERTIFICATE OF LOCATION OF GOVERNMENT CORNER

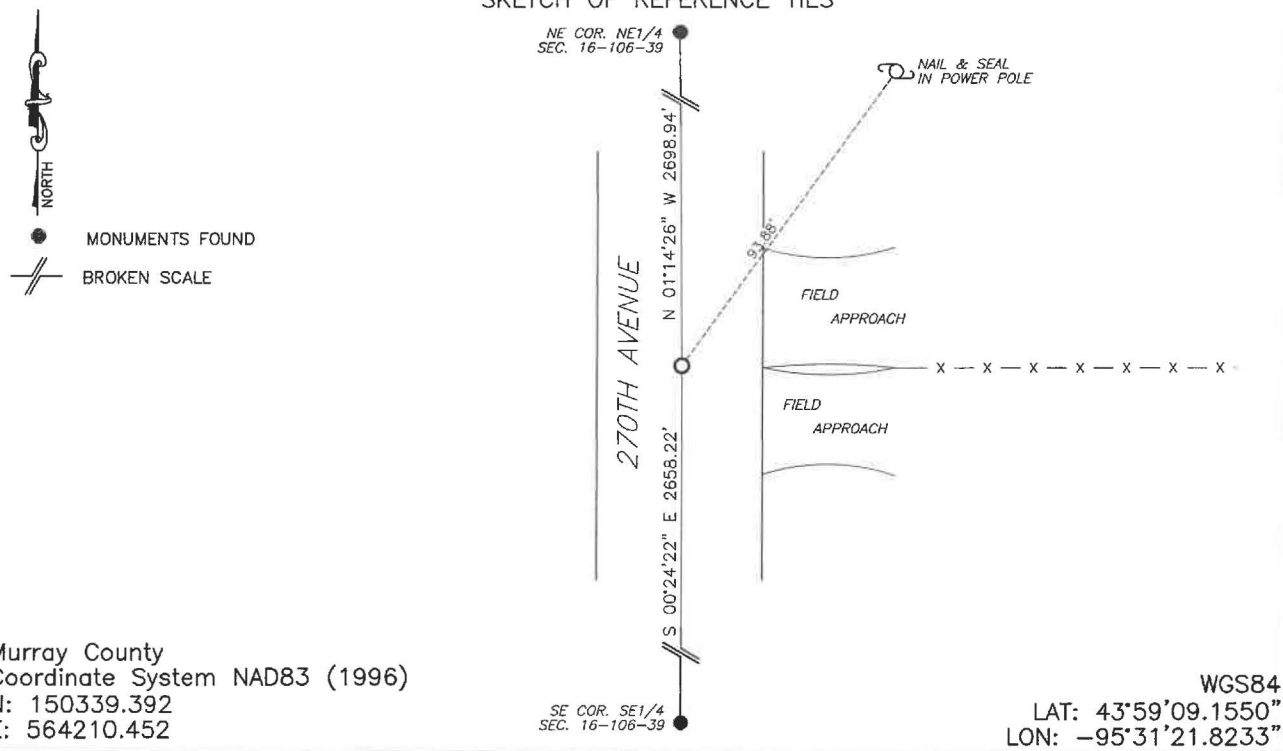
EAST QUARTER Corner of Section 16, Township 106, Range 39, 5TH P.M.

STATE OF MINNESOTA, County of MURRAY

At the corner location shown on the sketch:

- On 8/12/2024 found a 10"x14"x16" long stone below old road bed.  
DATE
- left monument as found,  lowered monument,  removed monument (explain)
- On 1/29/2025 placed a 5/8" iron with seal #43844 over top of the stone.  
DATE

### SKETCH OF REFERENCE TIES



NORTH  
 MONUMENTS FOUND  
 BROKEN SCALE

Murray County  
 Coordinate System NAD83 (1996)  
 N: 150339.392  
 E: 564210.452

WGS84  
 LAT: 43°59'09.1550"  
 LON: -95°31'21.8233"

Statement of evidence relative to this corner location is on back of page.

I hereby certify that this document and the data contained herein was prepared by me or under my direct supervision.

Daniel L. Bueltel  
 License No. 43844  
3/13/2025  
DATE

MAR 13 2025  
  
 MURRAY COUNTY RECORDER

Statement of Evidence

EAST QUARTER CORNER SECTION 16, T106N, R39W OF THE 5th P.M.

In September 1858 W.J. Neely surveyed the east township line.

In July of 1861 J.W. Myers surveyed the north, south, and west township lines.

In August of 1861 Wellman & Smoot subdivided the township.

June 24, 1912, J.W. Woolstencroft notes a 12"x12" field stone at the corner.

County records from April 10, 1974 note a large 1.5'x1' stone and placed an iron pin above.

On August 12, 2024 Bueltel-Moseng Land Surveying dug with a backhoe and found a large 10"x14"x16" long stone 4" below old road bed and placed a  $\frac{5}{8}$ " iron along the north side. Returned on January 29, 2025 and placed a  $\frac{5}{8}$ " iron with seal #43844 over top of the stone.